

iaa associates ltd



(chartered civil/structural engineers)

CORPORATE PROFILE 2020

LAPLACE HOUSE

YESUFU ABIODUN ONIRU ROAD

ONIRU ESTATE

VICTORIA ISLAND ANNEX, LAGOS.

P.O.BOX 70966, VICTORIA ISLAND

LAGOS, NIGERIA.

E-mail: info@iaaassociates.com

TEL: +234 1 45387318,+2347041204006

Mobile:+2348033266059

CORPORATE PROFILE



iaa associates ltd



(chartered civil/structural engineers)

“The more extensive a man’s knowledge of what has been done, the greater will be his power of knowing what to do”

Benjamin Disraeli

THE FIRM

IAA Associates Ltd. is an independent organization incorporated in Nigeria on the 28th February 1993, providing consultancy and advisory services in the fields of civil and structural engineering.

IAA Associates has well qualified engineers and technicians who have considerable expertise in both traditional and high-tech engineering. Through its key personnel IAA provides a personal and unbiased service to every individual client and deals with every project, large or small, with a high degree of engineering quality and efficiency.

The Company is capable of handling a wide variety of projects, including development engineering, conceptual engineering, detailed design, construction and project management. The firm has advised other consulting engineering firms, developers and contractors internationally on the construction and design of the largest and very technically advanced Civil Engineering Structures.

IAA Associates Ltd. has also carried out pre-conceptual and conceptual designs on multi-disciplinary installations involving the provision of detailed cost analyses and projected programme schedules. In this respect IAA Associates Ltd has been able to advise clients on considerations such as de-manning, refurbishment and upgrading of existing facilities as well as new developments.

IAA Associates Ltd. has the capability, resources and experience to provide high quality multi-disciplinary engineering and project management both onshore and offshore. Our services can begin with preliminary planning and extend through master planning, design, contract document preparation, and construction management and monitoring. These services are supported by extensive in-house computer facilities offering both analysis and computer-aided drafting.

By combining civil, structural, environmental engineering and management skills into selected project teams, we are able to provide a full range of services for complex infrastructure projects.

The office is purpose-built and located in Victoria Island, Lagos. The office has more than 1000m² of space with numerous computer rooms, meeting rooms plus parking and other facilities.

Our size and commitment to quality provides the right platform for success. IAA Associates Ltd adheres to excellence and innovation in our practices while putting quality first in all levels of our organization. This is the reason we were awarded the 2015 Gold Category winner of the BID International Quality Summit Award.

Structural engineering was IAA Associates' founding service, and today it remains a core part of the business. We have a joint venture agreement with one of the world's leading engineering professional services consulting firms, WSP South Africa on project by project basis. We have worked together with WSP South Africa on Ikoyi Meridian Hotel, Protea Hotel Ikeja, Protea Hotel Benin & Shopping mall complexes in Warri, Owerri, Asaba, Abeokuta and Abuja.

Presently we are working with International Property Awards winner, P&T Consultants Dubai, on the proposed 26-storey Hyatt Hotel in Victoria Island Lagos. One of the top 20 design firms in the world, Gensler Los Angeles is working with IAA Associates on the proposed 30-storey Osborne Hotel and 20-storey Apartment in Ikoyi Lagos. Finally we are working with DSA Architects South Africa on the proposed 30-storey Ikoyi Hotel and 15-storey Apartments in Ikoyi Lagos.

Our team balances a sound knowledge of traditional design and construction techniques with the ability to create innovative and safe buildable solutions which fulfill client and architectural vision.

Some of such projects include FIRS Headquarters Complex Abuja, City Estate Ikoyi Lagos with ATO Architects, African Development Bank HQ in Abuja with Interstate Architects, Nestoil Towers, Mixed-Use Development, mixed used development for Famfa Oil Limited, Alexander Avenue Apartments, Ikoyi Lagos with Adeniyi Coker Consultants Limited (ACCL), Diamond Bank Headquarters with James Cubitt Architects, Guaranty Trust Bank Centre Processing Centre and Contact Centre with FMA Architects, Victoria Mall Plaza 3 (VMP3) with Inchscape KI Architects and Ceddi Plaza, Abuja with Builders & Technical Information Consultants (B+TIC)

Unlike some of the larger firms, all of our clients are a priority irrespective of the size of the project. We have worked as structural engineers with Design Group Nigeria (DGN) on large projects like Intercontinental Hotel Lagos, Four Point by Sheraton Lagos and Temple Apartments Lagos. We have also worked on small and medium projects like Guaranty Trust Bank Data Centre and Alma Beach Estate was done with Adeniyi Coker Consultants Limited (ACCL)

Your project is just as important to us, as it is to you.

OUR SERVICES

IAA ASSOCIATES offers a range of services directly or through its associated companies, which include:

- Prefeasibility and Feasibility Studies
- Planning
- Project Management
- Detailed Design
- Tender Documents
- Tender Assessment
- Construction Drawings

OUR METHOD

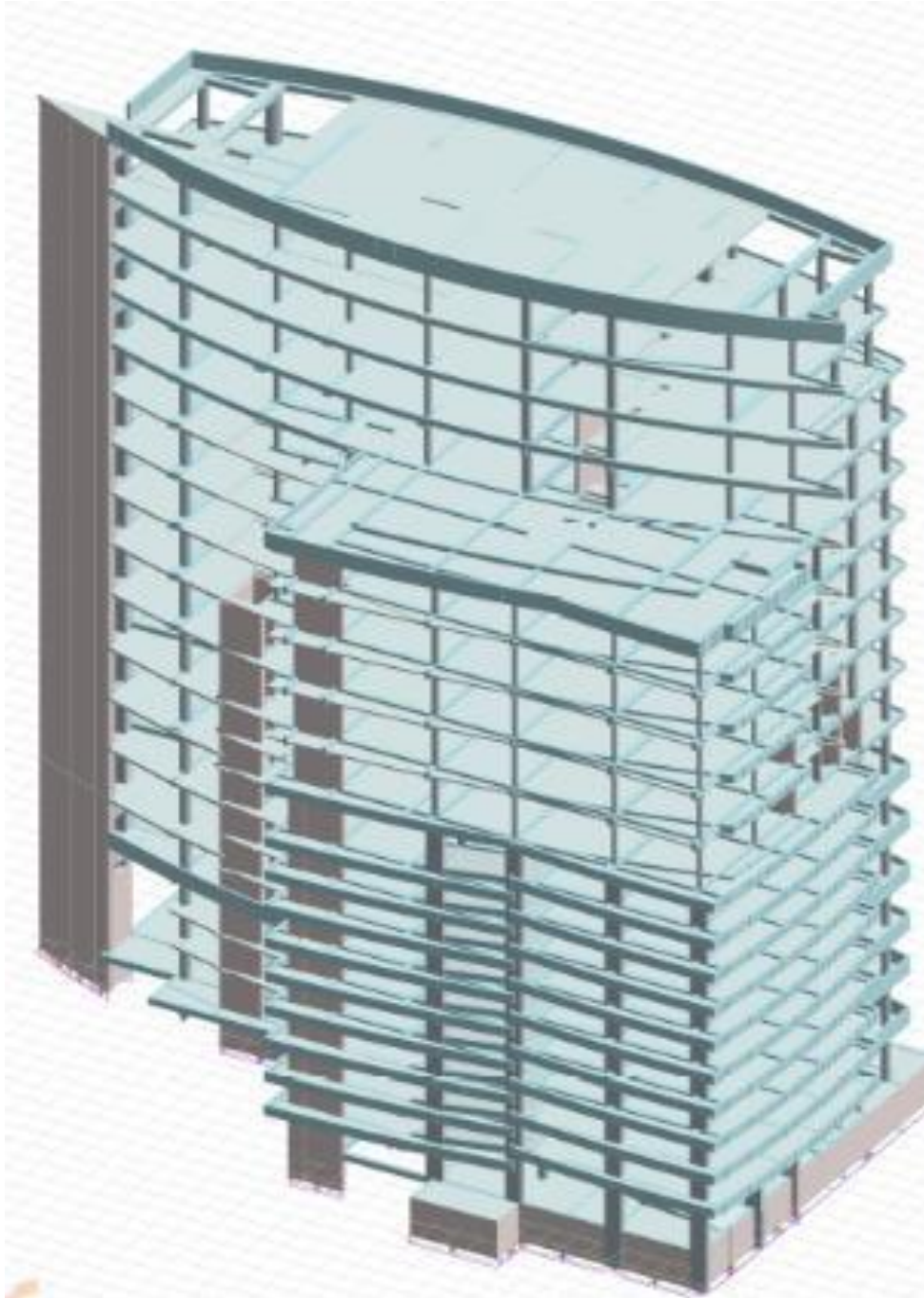
- Flexibility and adaptation to the needs of the clients; we set up tailor – made teams for each project.
- Task forces including experts and client's engineers.
- Association abroad in joint ventures with the strongest companies of long terms co-operation when required by client or justified by market demand.
- Permanent research for cost effective solutions.
- High level of quality assurance.

OUR PROJECTS

Since the incorporation of the company, it has handled wide variety of projects such as:

- Mixed-Used Development
- Commercial & Corporate Offices
- Hotels
- Structural Integrity Surveys and Assessment
- Residential
- Retail & Recreational Facilities
- Educational and Institutional
- Roads, Highways & Civil Infrastructure
- Industrial Projects





MIXED-USED

LE MERIDIEN GRAND HOTEL/APARTMENTS (15 STOREYS + 2 BASEMENT LEVELS) AT IKOYI, LAGOS

iaa
associates ltd.
(integrated advanced analysts)



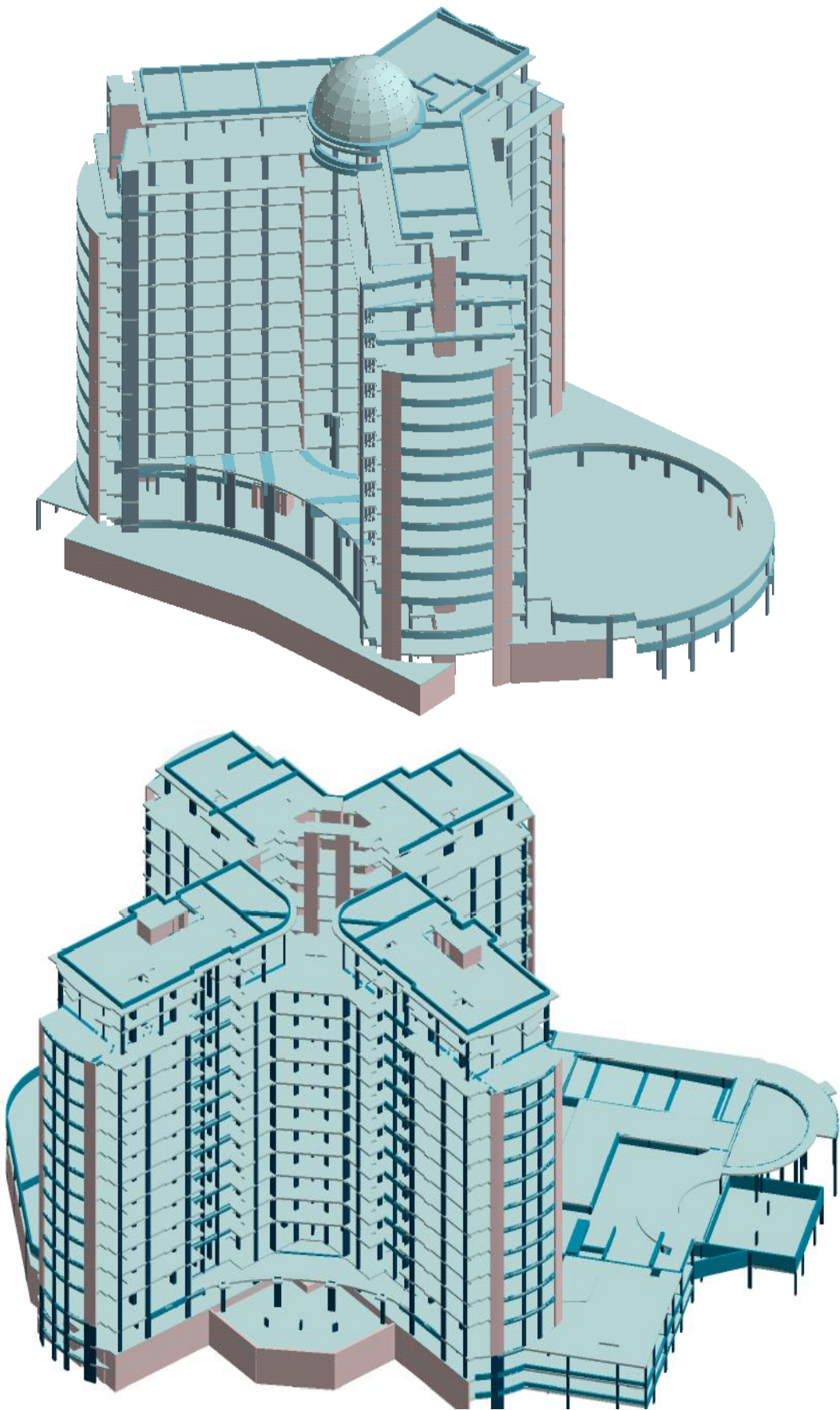
MIXED-USED



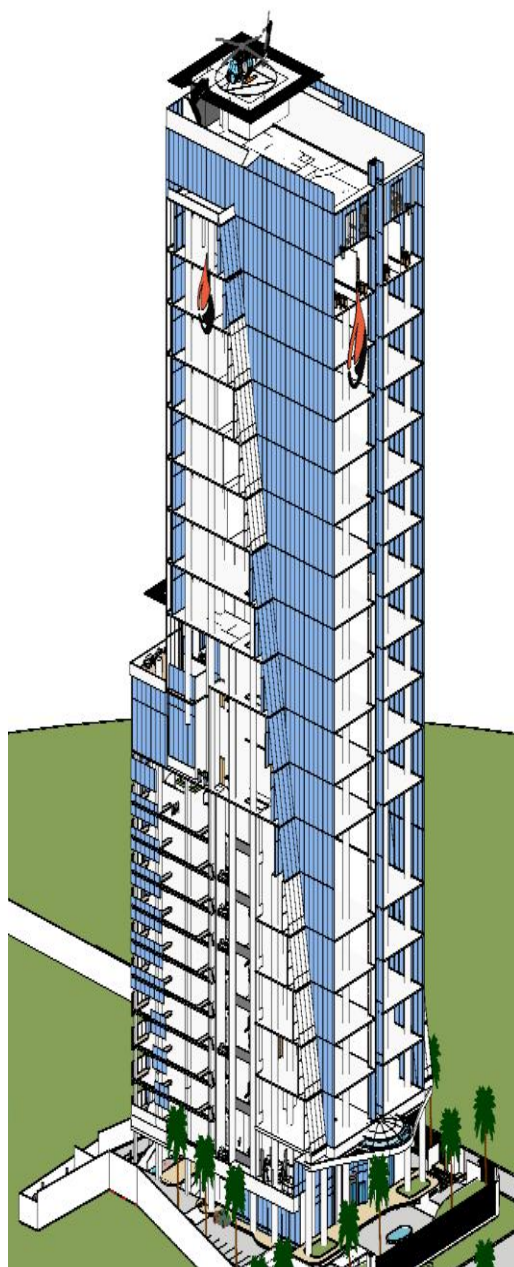
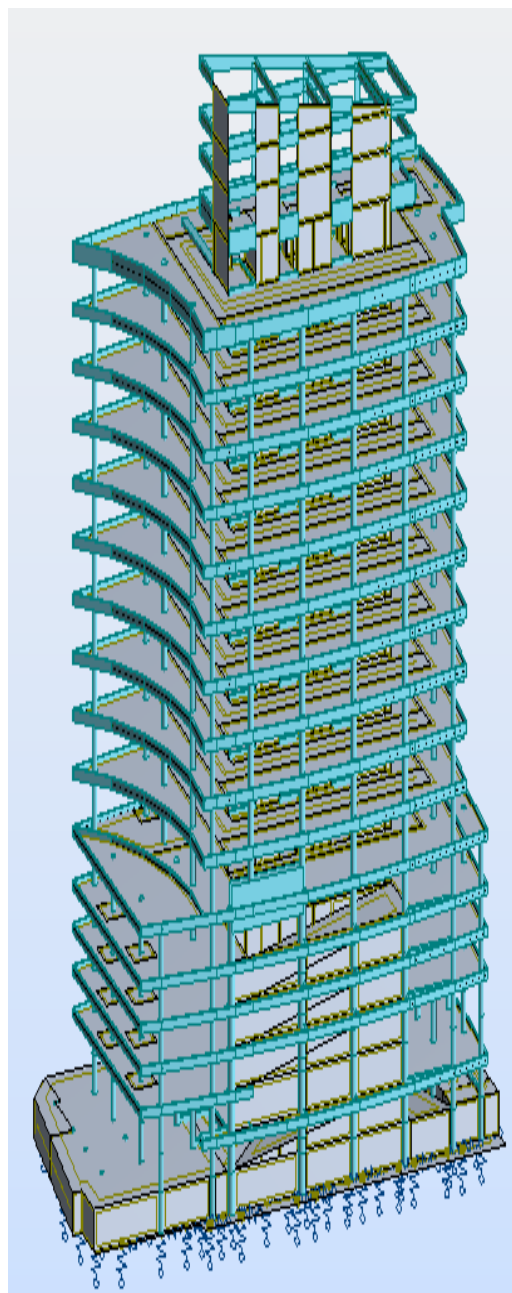
LE MERIDIEN GRAND HOTEL/APARTMENTS (15 STOREYS + 2 BASEMENT LEVELS) AT
IKOYI, LAGOS



MIXED-USED







MIXED-USED

NLNG PORT HARCOURT HEAD OFFICE PROJECT, PORT HACOURT, RIVERS
STATE



iaa
associates ltd.
(integrated advanced analysis)

COMMERCIAL



NLNG PORT HARCOURT HEAD OFFICE PROJECT, PORT HACOURT, RIVERS STATE

iaa
associates ltd.
(integrated advanced analysis)

COMMERCIAL



NLNG PORT HARCOURT HEAD OFFICE PROJECT, PORT HACOURT, RIVERS
STATE

iaa
associates ltd.
(integrated advanced analysts)

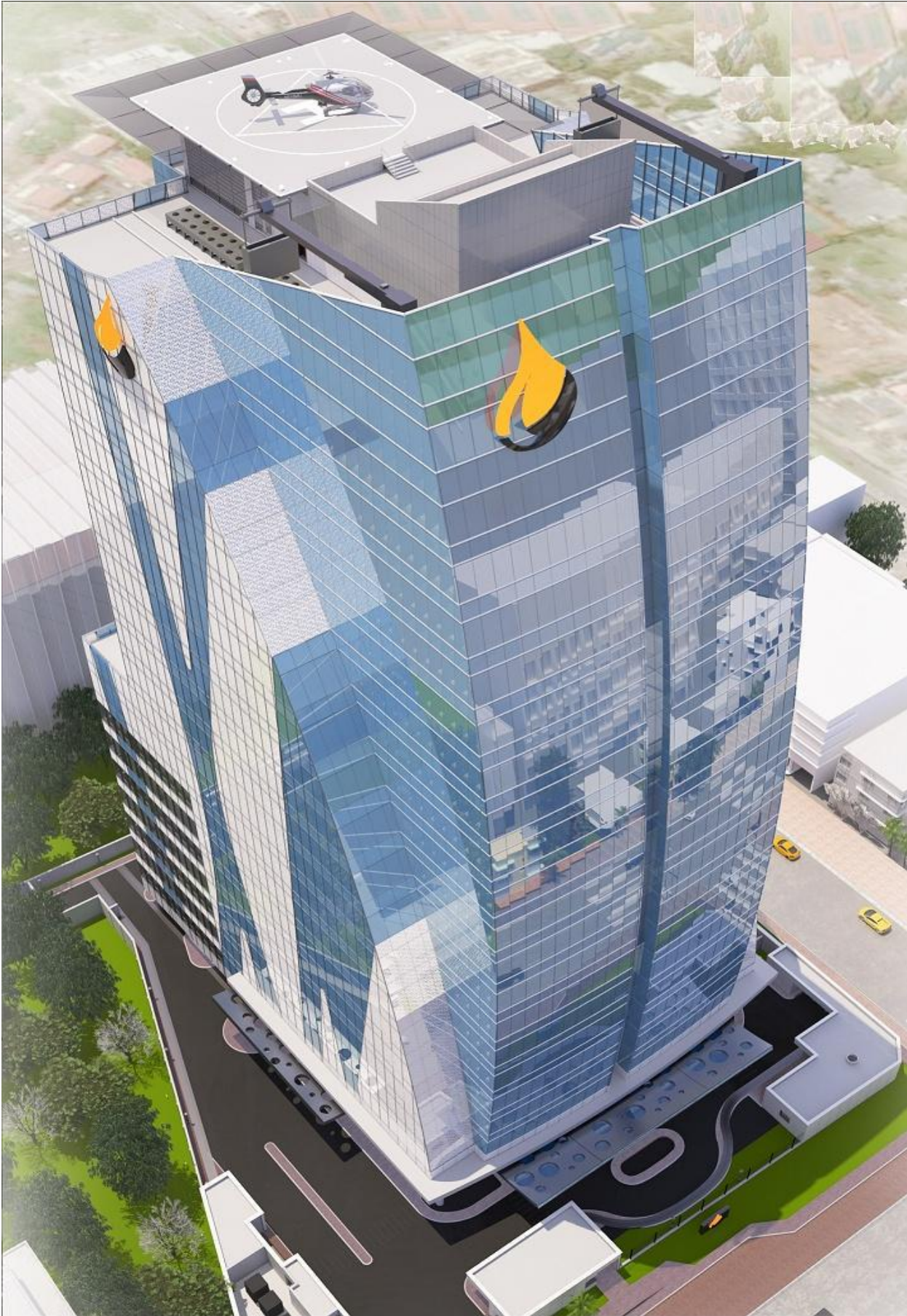


COMMERCIAL

**FAMFA TOWERS, 20 FLOORS WITH BASEMENT & HELIPAD AT ALFRED
REWANE ROAD IKOYI, LAGOS**

iaa
associates ltd.
(Integrated advanced analysts)

COMMERCIAL



**FAMFA TOWERS, 20 FLOORS WITH BASEMENT & HELIPAD AT ALFRED
REWANE ROAD IKOYI, LAGOS**

iaa
associates ltd.
(Integrated advanced analysts)



COMMERCIAL

**FAMFA TOWERS, 20 FLOORS WITH BASEMENT & HELIPAD AT ALFRED
REWANE ROAD IKOYI, LAGOS**

iaa
associates ltd.
(integrated advanced analysts)

COMMERCIAL



6 STOREY OFFICE DEVELOPMENT FOR DIAMOND BANK AT VICTORIA ISLAND, LAGOS

iaa
associates ltd.
(Integrated advanced analysts)

COMMERCIAL



6 STOREY OFFICE DEVELOPMENT FOR DIAMOND BANK AT VICTORIA ISLAND, LAGOS

iaa
associates ltd.
(integrated advanced analysts)

COMMERCIAL



DIAMOND BANK AT LEKKI TOLL GATE, LAGOS



COMMERCIAL

GT BANK DATA CENTER, IKOYI, LAGOS.

iaa
associates ltd.
(integrated advanced analysts)

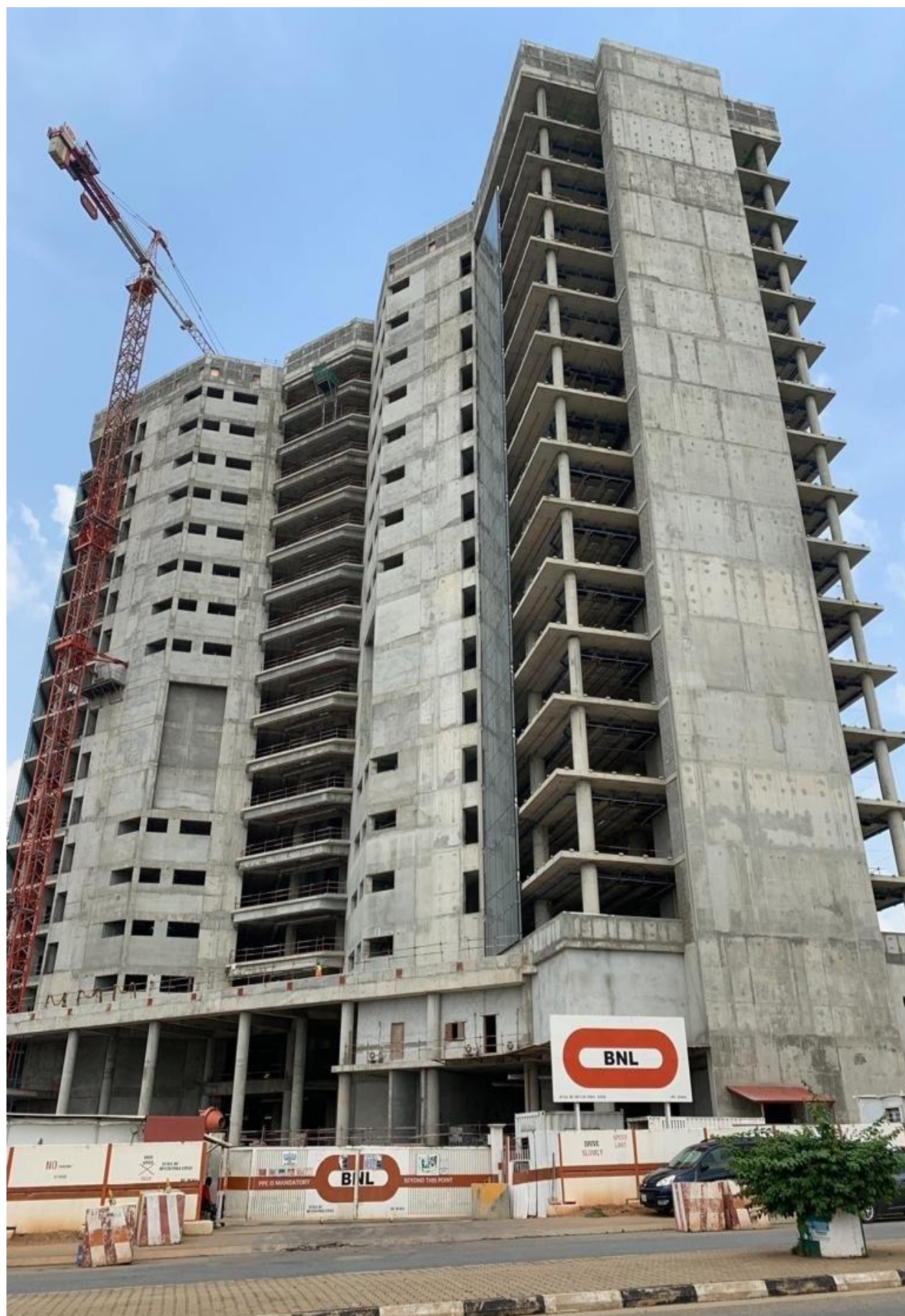


COMMERCIAL

**FIRS HEADQUARTERS (CORPORATE HEADOFFICE AND MULTI-LEVEL CARPARK)
AT ABUJA**

iaa
associates ltd.
(integrated advanced analysis)

COMMERCIAL



**FIRS HEADQUARTERS (CORPORATE HEADOFFICE AND MULTI-LEVEL CARPARK)
AT ABUJA**

iaa
associates ltd.
(integrated advanced analysis)



COMMERCIAL

**FIRS HEADQUARTERS (CORPORATE HEADOFFICE AND MULTI-LEVEL CARPARK)
AT ABUJA**

iaa
associates ltd.
(integrated advanced analysis)



COMMERCIAL

5 STOREY OFFICE BUILDING FOR AFRICAN DEVELOPMENT BANK AT ABUJA

iaa
associates ltd.
(integrated advanced analysis)



COMMERCIAL



AFRICA RE HEAD OFFICE BUILDING AT ABUJA

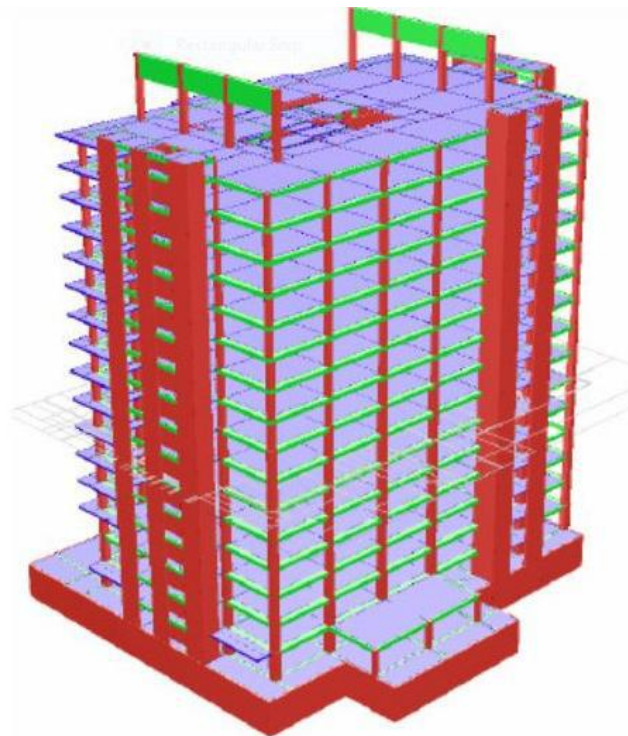
iaa
associates ltd.
(integrated advanced analysis)



COMMERCIAL

OFFICE BUILDING FOR N.D.I.C (17 STOREY + 1 BASEMENT) AT IKOYI, LAGOS

iaa
associates ltd.
(Integrated advanced analysis)



Structural 3-D Model (CSC Orion)

COMMERCIAL

INTERCONTINENTAL HOTEL (22 – STOREY + 3 BASEMENT LEVELS) AT VICTORIA ISLAND, LAGOS

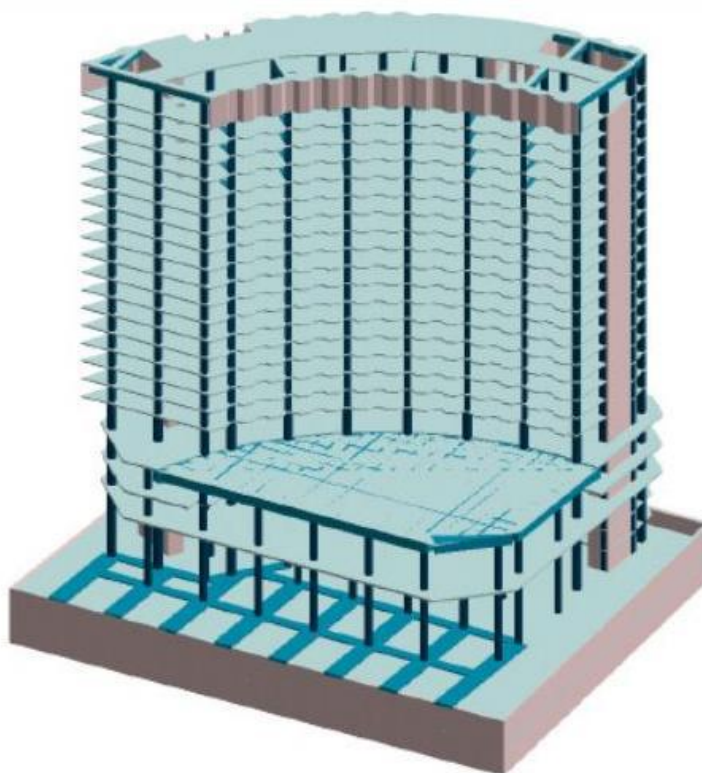
iaa
associates ltd.
(Integrated advanced analysis)

HOTELS



INTERCONTINENTAL HOTEL (22 – STOREY + 3 BASEMENT LEVELS) AT VICTORIA ISLAND, LAGOS

iaa
associates ltd.
(Integrated advanced analysis)



Structural 3-D Model (Strusoft)

HOTELS

FOUR SEASONS HOTELS (18 FLOOR LEVELS,2 ROOF LEVELS + 1 BASEMENT LEVEL) AT IKOYI.

iaa
associates ltd.
(Integrated advanced analysts)

HOTELS



FOUR SEASONS HOTELS (18 FLOOR LEVELS,2 ROOF LEVELS + 1 BASEMENT LEVEL) AT IKOYI.

iaa
associates ltd.
(integrated advanced analysis)

HOTELS



FOUR POINT HOTEL (BY SHERATON) AT VICTORIA ISLAND, LAGOS

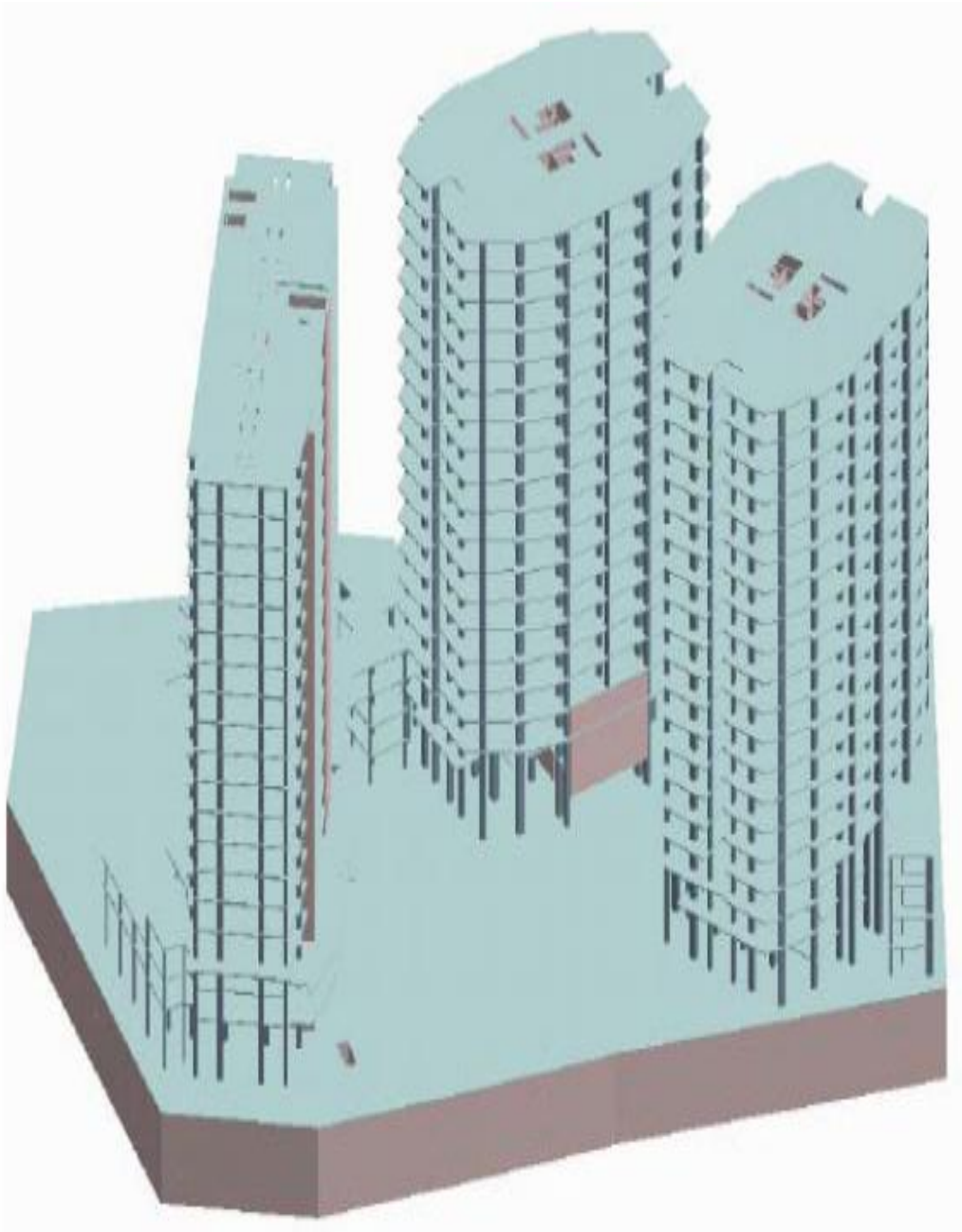
iaa
associates ltd.
(Integrated advanced analysts)



HOTELS

PROPOSED GRAND HYAAT HOTEL AND APARTMENTS AT VICTORIA ISLAND, LAGOS

iaa
associates ltd.
(integrated advanced analysts)



HOTELS

19 - STOREY PROPOSED IKOYI HOTEL & SERVICED APARTMENT AT VICTORIA ISLAND, LAGOS

iaa
associates ltd.
(integrated advanced analysts)

HOTELS

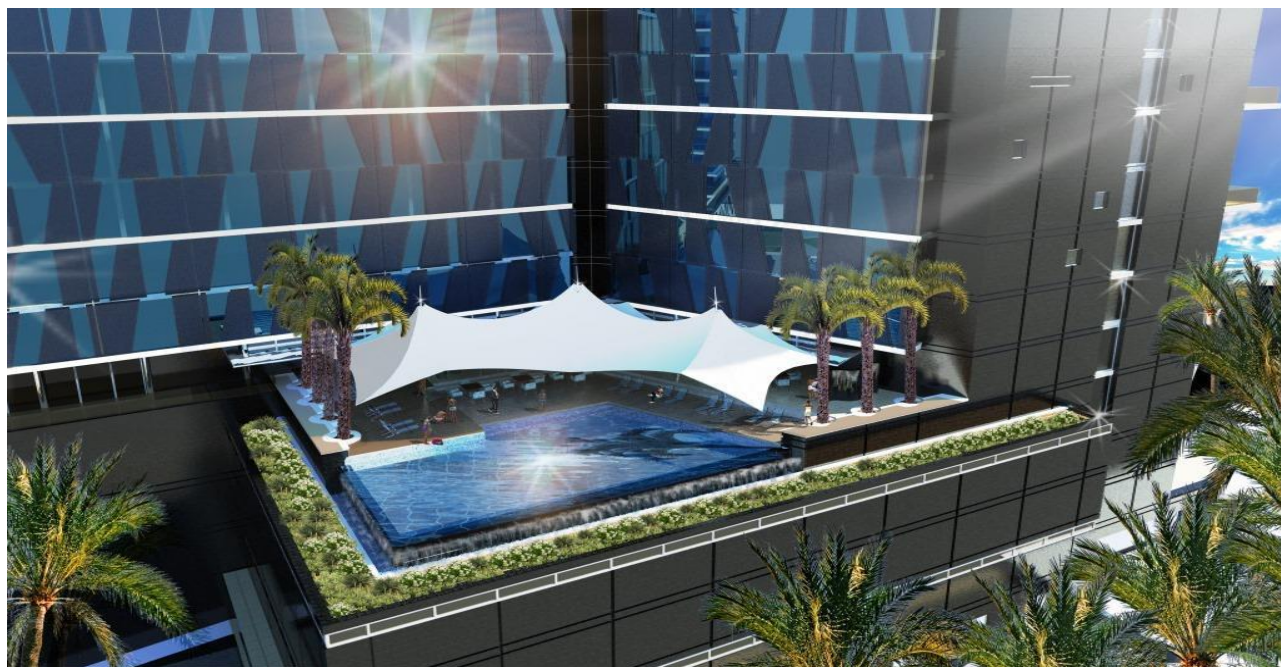


19 - STOREY PROPOSED IKOYI HOTEL & SERVICED APARTMENT AT VICTORIA ISLAND, LAGOS

iaa
associates ltd.
(integrated advanced analysis)



HOTELS



**TWIN-LAKE ESTATE FOR PENINSULA TLE MULTI-PURPOSE COOPERATIVE SOCIETY
LIMITED (PTMCS), ALONG LEKKI-EPE EXPRESS WAY, LAGOS.**

iaa
associates ltd.
(Integrated advanced analysts)



RESIDENTIAL

**15 - STOREY TWIN TOWER LUXURY RESIDENTIAL APARTMENT AT TEMPLE ROAD,
IKOYI, LAGOS.**



iaa
associates ltd.
(Integrated advanced analysts)

RESIDENTIAL

RESIDENTIAL





RESIDENTIAL

RACHEL COURT ABUJA (5 FLOOR WITH BASEMENT FOR STORAGE)

iaa
associates ltd.
(integrated advanced analysts)



RESIDENTIAL

RESIDENTIAL DEV AT INNER CRESCENT



iaa
associates ltd.
(integrated advanced analysts)

RESIDENTIAL

RESIDENTIAL DEV AT QUEENS DRIVE, IKOYI

iaa
associates ltd.
(integrated advanced analysts)



RESIDENTIAL

RESIDENTIAL DEVELOPMENT AT MOORE ROAD, IKOYI, LAGOS

iaa
associates ltd.
(integrated advanced analysis)



RESIDENTIAL

RESIDENTIAL DEVELOPMENT AT MOORE ROAD, IKOYI, LAGOS

iaa
associates ltd.
(Integrated advanced analysts)



RESIDENTIAL



VICTORIA MALL PLAZA 3, AT BISHOP ABOYADE COLE VICTORIA ISLAND, LAGOS

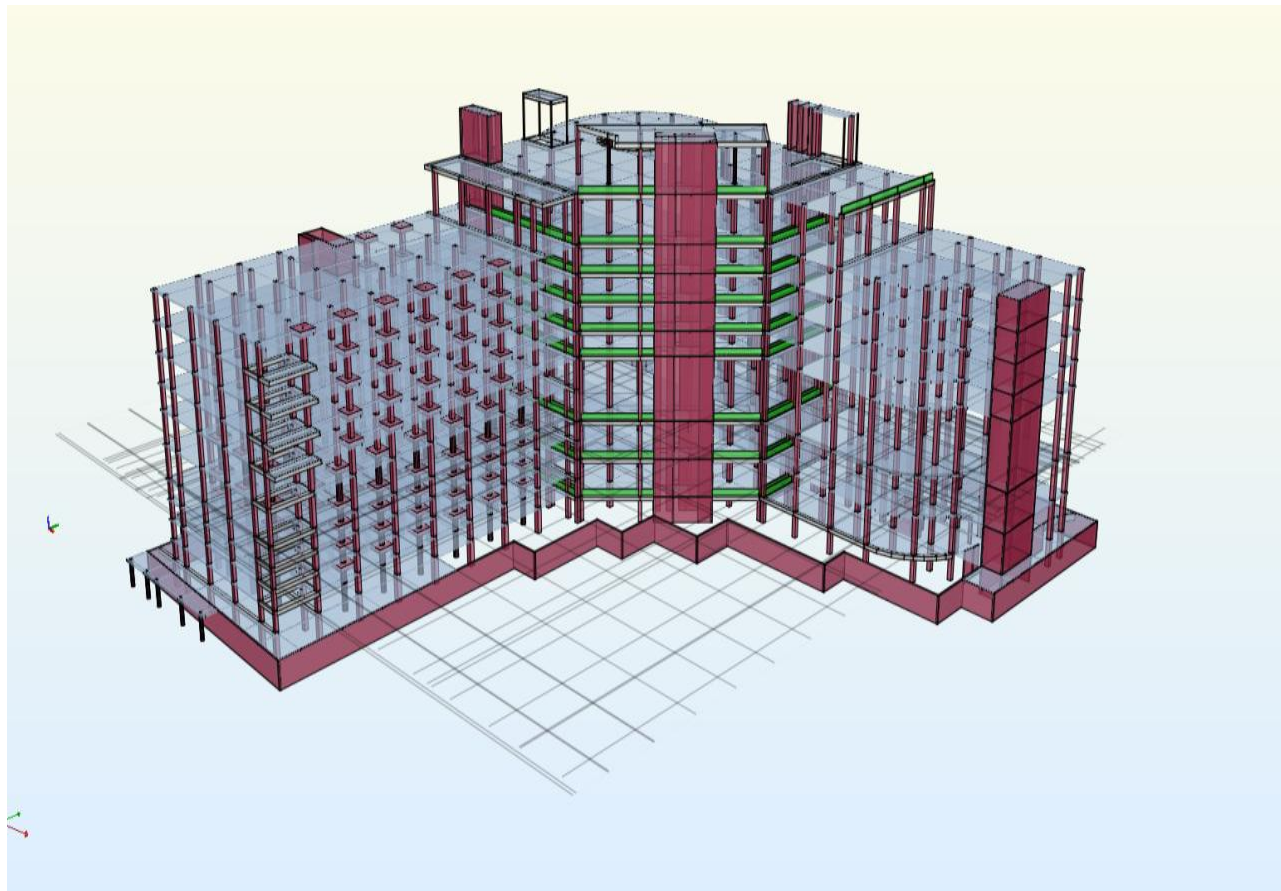
iaa
associates ltd.
(integrated advanced analysts)



RETAIL

8 STOREY REDEVELOPMENT OF THE FALOMO SHOPPING CENTRE, IKOYI, LAGOS

iaa
associates ltd.
(integrated advanced analysis)



RETAIL

ROSE OF SHARON FOUNDATION VOCATIONAL SCHOOL, AT YABA, LAGOS

iaa
associates ltd.
(integrated advanced analysts)



INSTITUTIONAL

SUNDAY SCHOOL EXTENSION FOR VICTORIA FELLOWSHIP CHURCH, AT LEKKI, LAGOS

iaa
associates ltd.
(Integrated advanced analysis)



INSTITUTIONAL

GOTHIC ROMAN CATHOLIC CHURCH, AT VICTORIA ISLAND, LAGOS

iaa
associates ltd.
(integrated advanced analysts)

INSTITUTIONAL



CITADEL FOR LATTER RAIN ASSEMBLY,IKEJALAGOS

iaa
associates ltd.
(integrated advanced analysts)

INSTITUTIONAL



CITADEL FOR LATTER RAIN ASSEMBLY,IKEJALAGOS

iaa
associates ltd.
(integrated advanced analysts)



INSTITUTIONAL



CONSOLIDATED MAINTENANCE WORKSHOP & OFFICE BUILDING, AT WARRI, DELTA FOR CHEVRON

iaa
associates ltd.
(Integrated advanced analysts)



INDUSTRIAL

CSG BLASTING AND PAINTING WORKSHOP, AT WARRI, DELTA FOR CHEVRON

iaa
associates ltd.
(Integrated advanced analysis)

INDUSTRIAL





ARCHITECTS

- ADENIYI COKER CONSULTANTS LTD –ACCL
- DESIGN GROUP NIGERIA –DGN
- FMA ARCHITECTS
- A. T. ONAJIDE ARCHITECTS -ATO
- PIEACH ARCHITECTS
- JAMES CUBITT ARCHITECTS -JCA
- PWO ARCHITECTS
- B+TIC ARCHITECTS
- DAA ARCHITECTS
- INTERSTATE ARCHITECTS
- INCHSCAPE ARCHITECTS
- GENSLER, LOS ANGELES , USA
- GENSLER , LONDON, UK
- SVA ARCHITECTS , SA
- SAOTA, SA
- GLH ARCHITECTS
- DSA ARCHITECTS
- SCOTT TALLON WALKER ARCHITECTS, IRELAND, UK

PROJECT MANAGERS

- PROFICA
- COURTNEY MICHAEL PARTNERSHIP
- MACE

ENGINEERS

- OTCE-FRANCE
- WSP STRUCTURES, SOUTH AFRICA
- PUNCH – IRELAND, UK

- UACN PROPERTY DEVELOPMENT COMPANY -UPDC
- OSBOURNE PROPERTIES INVESTMENT GROUP
- PIVOT ENGINEERING
- JULIUS BERGER NIGERIA
- NIGERIAN DEPOSIT INSURANCE CORPORATION –NDIC
- FEDERAL INLAND REVENUE SERVICE –FIRS
- NIGERIAN PORTS AUTHORITY -NPA
- CHEVRON NIGERIA LTD
- MOBIL PRODUCING NIGERIA
- NIGERIA LIQUEFIED NATURAL GAS COMPANY- NLNG
- WALTERSMITH OIL
- FAMFA OIL
- NESTOIL PLC
- ARICAN RE
- RADISSON BLU HOTEL
- INTERCONTINENTAL HOTEL
- FOUR SEASONS HOTEL
- HILTON HOTEL
- PULLMAN HOTEL
- MERIDIAN HOTEL
- ZENITH BANK
- GT BANK
- ACCESS BANK PLC
- FIDELITY BANK
- FIRST BANK
- UBA PLC
- FCMB BANK
- MTN
- GLOBACOM
- RCCG
- GOTHIC CHURCH
- DOMINION HALL CITADEL GLOBAL

OUR CLIENTS

IAA ASSOCIATES Ltd and its employees are active member of the following professional societies and association:

- **International Federation of Consulting Engineers (FIDIC)**
- **Association of Consulting Engineers, Nigeria (ACEN)**
- **Council for the Regulation of Engineering in Nigeria (COREN)**
- **Nigeria Society of Engineers (NSE)**
- **Nigerian Institute of Civil Engineers (NICE)**
- **Institution of Civil Engineers (ICE)**

Name	Position	Qualifications	Years of Experience
Adeleke Akintilo (Dr.)	Principal Partner	Ph.D (UK), DIC, C.Eng, FIsructE, FNSE, FICE, MASCE, COREN	35
Adesina, E. O.	Associate Partner	Bsc., MNSE, COREN	25
Ogbodo, F. M.	Associate Partner	Bsc., MNSE, COREN	14
Shobamowo, P. O.	Associate	Bsc., MNSE, COREN	13
Adeosun, S. A.	Associate	B.Eng., MNSE, MNICE, COREN	12
Onuzulike, C. I.	Project Director	Bsc., MNSE, COREN	9
Bakare, A.A.	Project Director	Bsc., MNSE, COREN	9
Ezema, C.I	Project Director	PGD, HND	9
Ishiguzor, N.A.	Project Engineer	Bsc., MSc., MNSE, COREN	9
Labiran, T.O	Project Engineer	Bsc., MSc., MNSE, COREN	7
Kotun, G.O.	Project Engineer	Bsc., MSc., MNSE	7
Olatunbosun, M	Project Engineer	Bsc., MNSE,	4

OUR KEY PERSONNEL

WORKSTATIONS, DESKTOPS & LAPTOPS WITH LICENSED SOFTWARE APPLICATIONS

S/N	MACHINE ID	HOST/MACHINE	AUTODESK BDS & Structural Detailing	CADS RC / BEAM DESIGNER	FEM	BENTELY	ORION	TEKLA	TEDDS
1	IAA80-WIN7	HP Z1 WORKSTATION	BDSP 2017	BD v 4.07					TEDDS V.2017
2	IAA 74-WIN7	Elite 800 G1 SFF i7	BDSP 2015	BD v 4.07			VI8.0 (USB)	V 15,16 & 16i	
3	IAA 77-WIN7	HP Z1 WORKSTATION	BDSP 2016	BD v 4.07		ENTERPRIS E LIC	VI8.0 (N)	V 15,16 & 16i	
4	IAA 73-WIN7	Elite 800 G1 SFF i7	BDSP 2015	CADS V 2015.01					TEDDS V.2015 (N)
5	IAA79-WIN10	HP ENVY 360	BDSP 2017	CADS V 2016					
6	IAA66-WIN7	HP ENVY	BDSP 2015	CADS V 2016					
7	IAANDIC01-WIN10	HP	BDSP 2017	CADS V 2016					
8	IAA 75-WIN7	HP Z1 WORKSTATION	BDSP 2016	CADS V 2016 & SME 6.45		ENTERPRIS E LIC			
9	IAA55-PC	SG3-230UK	AUTOCAD 2014	CADS V 9.12					
10	IAA60-WIN7	HP 8300 Elite	IDS 2013	CADS V 9.12					
11	IAA62-WIN7	Elite 800 G1 SFF	BDSP 2014	CADS V 9.12					
12	IAA63-WIN7	Elite 800 G1 SFF	BDSP 2014	CADS V 9.12					
13	IAA64-WIN7	Elite 800 G1 SFF	BDSP 2014	CADS V 9.12	V.12,13 ,15.0				
14	IAA67-Win7	Elite 800 G1 SFF	BDSP 2014	CADS V 9.12					
15	IAA58 - WIN7	HP Elite 8300 SFF	AUTOCAD 2013	CADS V 9.12					
16	IAA 78-WIN7	HP Z1 WORKSTATION	BDSP 2016	CADS V 9.12			VI8.0 (N)	V 15,16 & 16i	
17	NLNG CON	DELL Laptop	BDSP 2016	CADS V 9.12					
18	NLNG CON 3	DELL Laptop	BDSP 2016	CADS V 9.12					TEDDS V.2015 (N)
19	IAA58	SONY VCPEH	AUTOCAD 2013	CADS V9.09					
20	IAA33	SR 5139UK	AUTOCAD 2009,SD2012	CADS V9.12					
21	IAA59	Sony VAIO	AUTOCAD 2015	CADS V9.12				2015,2016 & 2016i	
22	IAA72-WIN7	HPZ420 WORKSTATION	BDSU (N) 2014 & 2015				VI8.0 (N)	2015,2016 & 2016i	
23	IAA71-WIN7	HP Zbook17	BDSU (S) 2014 & 2015, 2017 (N)						
24	IAA51-PC	SONY VGN-FW11M	AUTOCAD 2013						
25	IAA53-WIN7	SR 5606 UK							
26	IAA25-WIN7	SR 2129UK							
27	IAA26-WINXP	HP DC7800							
28	IAA27	SR 2129UK							
29	IAA31	SR 2129UK							
30	IAA35-WIN7	HP DX 2300							
31	IAA39	HP COMPAQ				STAAD PRO V4.0			
32	IAA43	HP DC7800							
33	IAA44	HP DC7800							
34	IAA45	HP DC7800							
35	IAA46	HP DC7800							
36	IAA47	HP DC 7800							
37	IAA41	HP DC7800							
38	IAA 50-	HP DC 7800							

WORKSTATIONS, DESKTOPS & LAPTOPS WITH LICENSED SOFTWARE APPLICATIONS

	WINXP								
39	IAA52-WIN7	SR 5606 UK							
40	IAA54-WIN7	SG3-230UK	AUTOAD 2014 & LIC SERVER		LIC SERVER				
41	IAA56	Elite 8300	BDSU 2017		V.12,13 ,15.0				
42	IAA57	HP Elite 8300	BDSP 2017				VI8.0 (S)		
43	IAA59-WIN7	HP 8300 Elite	ABDSU 2013& 2017 (N)			R.CONCEPT & STADD	VI8.0 (USB)		
44	IAASERVER	HP Poliant DL 380 G7	2013 LIC SRV (N)						
45	IAA65-WIN7	Elite 800 G1 SFF	BDSP 2013,BDSP 2017						
46	IAA69-WIN7	Elite 800 G1 SFF	BDSP 2015						
47	IAA70-WIN7	Probook 423G1							
48	IAA68-WIN7	HP Zbook17	SD 2013 & BDSP 2015						
49	IAA 76- WIN7	HP Z1 WORKSTATION	BDSP(N) 2016				VI8.0 (N)	V 15,16 & 16i	TEDDS V.2015 (N)
50	NLNG CON 2	DELL Laptop	BDSU 2016						
51	NLNG CON 4	DELL Laptop	BDSP 2016				VI8.0 (N)	TEDDS V.2015	
52	IAAUPDC02- WIN10	DELL INSPIRON 5559							

PRINTERS & COPIERS LIST

S/N	MACHINE ID	QUANTITY
1	HP DESIGNJET 1050C	1
2	HP DESIGNJET T1100	2
3	HP OFFICEJET 7110	1
4	HP LASERJET 5200	1
5	HP DESKJET 1280C	2
6	HP COLOUR LASERJET CP5225	1
7	HP LASERJET 1600	1
8	SHARP MULTIFUNCTION	1
9	SHARP COPIER	1
10	HP SCANJET G4010	1

COMMUNICATION EQUIPMENT LIST

S/N	MACHINE ID	TABLE NUM/LOCATION	GROUP	QTY
1	PANASONIC TDA 100D	IT Room_1st	COMMS	1
2	PANASONIC KX-T7730 CONSOLE	Reception	COMMS	1
3	46U 800 X 600 DATA CABINET	Server Room_Grd	COMMS	2
4	27U 800 X 600 DATA CABINET	IT Room_1st	COMMS	1
5	46U 800 X 600 DATA CABINET	Server Room_2nd	COMMS	1
6	9U 600X600 WALL MOUNT CABINET	HR Office	COMMS	1
7	9U 600X600 WALL MOUNT CABINET	IT Room_1st	COMMS	1
8	9U 600X600 WALL MOUNT CABINET	IT Room_2nd	COMMS	1
9	DLINK 24PORT10/100/1000 SWITCH	Server Room_Grd	COMMS	1
10	DLINK DES-1008D	Reception lobby	COMMS	1
11	CISCO 5B WAP	STAIRCASE LOBBY	COMMS	1
12	DLINK DES-1008D	STAIRCASE LOBBY	COMMS	1
13	CISCO 2650 10/100/1000 SWITCH	IT Room_1st	COMMS	1
14	DLINK DES-1024D	IT Room_1st	COMMS	1
15	DLINK DES-1024D	IT Room_2nd	COMMS	1
16	TPLINK 24 PORT 10/100/1000 SWITCH	IT Room_1st	COMMS	1
17	CYBEROAM wing35 FIREWALL	IT Room_1st	COMMS	1
18	CISCO SMALL BUSINESS VPN ROUTER	IT Room_1st	COMMS	1
19	CISCO 5B WAP 8.0211 B	Drawing office	COMMS	1
20	TPLINK 8 PORT WIRELESS ROUTER	Server Room_2nd	COMMS	1
21	DLINK 8 PORT 10/100/1000 SWITCH	Drawing office	COMMS	1
22	DLINK 8 PORT 10/100/1000 SWITCH	Drawing office	COMMS	1
23	DLINK 8 PORT 10/100/1000 SWITCH	Admin_1 st FLR	COMMS	1
24	3COM 4 PORT 10/100/1000 SWITCH	Analysis Room	COMMS	1
25	PANASONIC KS 550	Drawing Office	COMMS	7
26	PANASONIC ANALOGUE PHONE	Dr Office	COMMS	1
27	PANASONIC KS 550	Analysis Room	COMMS	2
28	PANASONIC KS 550	Admin_1 st FLR	COMMS	1
29	PANASONIC KS 550	IT Room_1st	COMMS	1
30	PANASONIC KS 550	Accounts 1	COMMS	1
31	PANASONIC KS 550	HR Office	COMMS	1
32	PANASONIC KS 550	Accounts 2	COMMS	1
33	MULTILINKS VOICE & DATA MODEM	Gate House	COMMS	1
34	52" SONY BARVIA SMART TV	Reception	COMMS	1
35	52" SONY BARVIA SMART TV	Conference Room1	COMMS	1
36	CISCO SX 20	Conference Room1	COMMS	1
37	FLOOR BOX	Drawing Office	COMMS	9

INTERGRITY TESTING BUILDING ELEMENTS

S/N	EQUIPMENT TYPE	QTY
1	ULTRASONIC THICKNESS METER	1
2	PROCEQ-ULTRA SONIC PULSE VELOCITY	1
3	PROCEQ-SCHMIDT HAMMER	1
4	PROCEQ- PROFOMETER 5	1
5	ACCELEROMETER	4

INTEGRATED ADVANCED ANALYSTS (IAA) ASSOCIATES LTD

iaa
associates ltd.
(integrated advanced analysts)



LAPLACE HOUSE

YESUFU ABIODUN ONIRU ROAD

ONIRU ESTATE

VICTORIA ISLAND ANNEX, LAGOS.

P.O.BOX 70966, VICTORIA ISLAND

LAGOS, NIGERIA.

E-mail: info@iaaassociates.com

TEL: +234 1 45387318,+234 7041204006

Mobile:+234 8033266059

CONTACT INFORMATION

Dr Adeleke Akintilo(Principal Partner)	+234 803 326 6059	adeleke.akintilo@iaaassociates.com
Engr. Ogbodo Maduka (Senior Associate)	+234 803 778 2412	maduka.ogbodo@iaaassociates.com
Engr. Shobamowo Peters (Associate)	+234 809 821 0851	olayinka.shobamowo@iaaassociates.com
Engr. Adeosun Adewale (Associate)	+234 803 571 7728	adewale.adeosun@iaaassociates.com
Mr. Ihunweze Uche (Company Secretary)	+234 805 635 0141	uche.ihunweze@iaaassociates.com

OUR CONTACT PERSONS